



# Juvenile Justice Reentry:

*An evidence-based approach to effective systems reform*



# The Reentry Project Seeks to Show...

We can reduce reliance on incarceration and save public monies by taking evidence-based policies and programs to scale.

We can change the paradigm by which we fund such programs through the recognition, capture, and reinvestment of public dollars now directed at expensive “deep-end” expenditures.

# And...

We can reduce the disproportional involvement of youth of color in our juvenile and adult justice systems by increasing the capacity of community-based agencies serving youth and families of color.

We can bridge the gaps between programmatic “silos” *within what should be* an integrated system – with particular emphasis on mental health, drug and alcohol treatment, juvenile justice and youth and family services.

# History

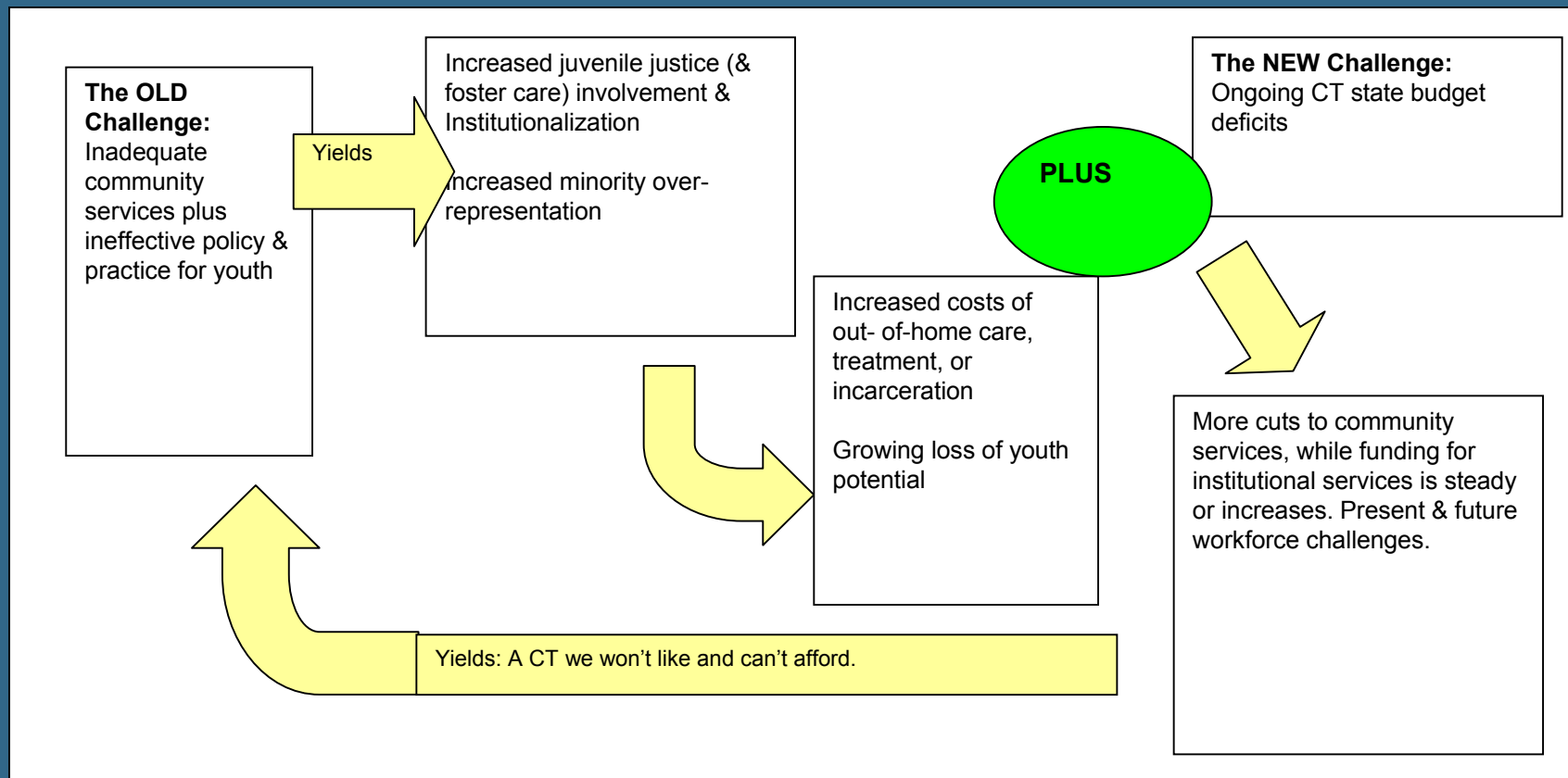
July 23, 2003 -- Working Group, including Juvenile Justice Alliance, CETC Youth Committee, DOL, OWC & Chief Administrative Judge for Juvenile Matters, endorses JJ re-entry Bridgeport pilot

CT JJ Alliance --funded by JEHT and Tow Foundations--hires ED, Fernando Muniz



CT Voices -- working with Casey Family Services, DCF, OWC, & DOL -- receives Youth Opportunity foster care planning grant for Bridgeport/Hartford pilots

# Systems Challenges



# Challenges to Be Addressed

1. Public resources heavily weighted toward “deep-end” responses at the expense of prevention and community-based intervention

<b>Placement</b>	<b>Per Diem Cost</b>
Juvenile Detention	\$328
Juvenile Training School	\$891
Riverview Hospital	\$1348

Source: Department of Children and Families, August 2003.

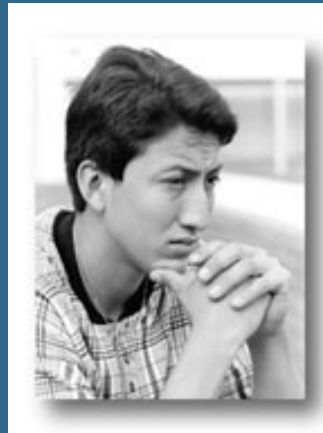
# Cross-State Comparison

<b>State</b>	<b>Per Diem Cost</b>	<b>Recidivism Rate</b>
Missouri	\$103	11%
Maryland	\$192	44%
Florida	\$271	42%

CT's Recidivism Rate=46%

Sources: *Juvenile Justice at a Crossroads.* Advocasey, Volume 5, No. 1, Spring 2003.  
"State of Connecticut Juvenile Justice Recidivism Outcomes Evaluation," CT Policy and Economic Council, July 2002.

## 2. Policy and political challenges inherent in decisions NOT to expand institutional beds



Proposed Detention Center Capacity=88 beds  
Current Bridgeport Detention Residents=8 juveniles

**Source: Court Support Services Division, August 2003.**



### 3. Disproportional minority representation in the JJ and adult criminal justice systems

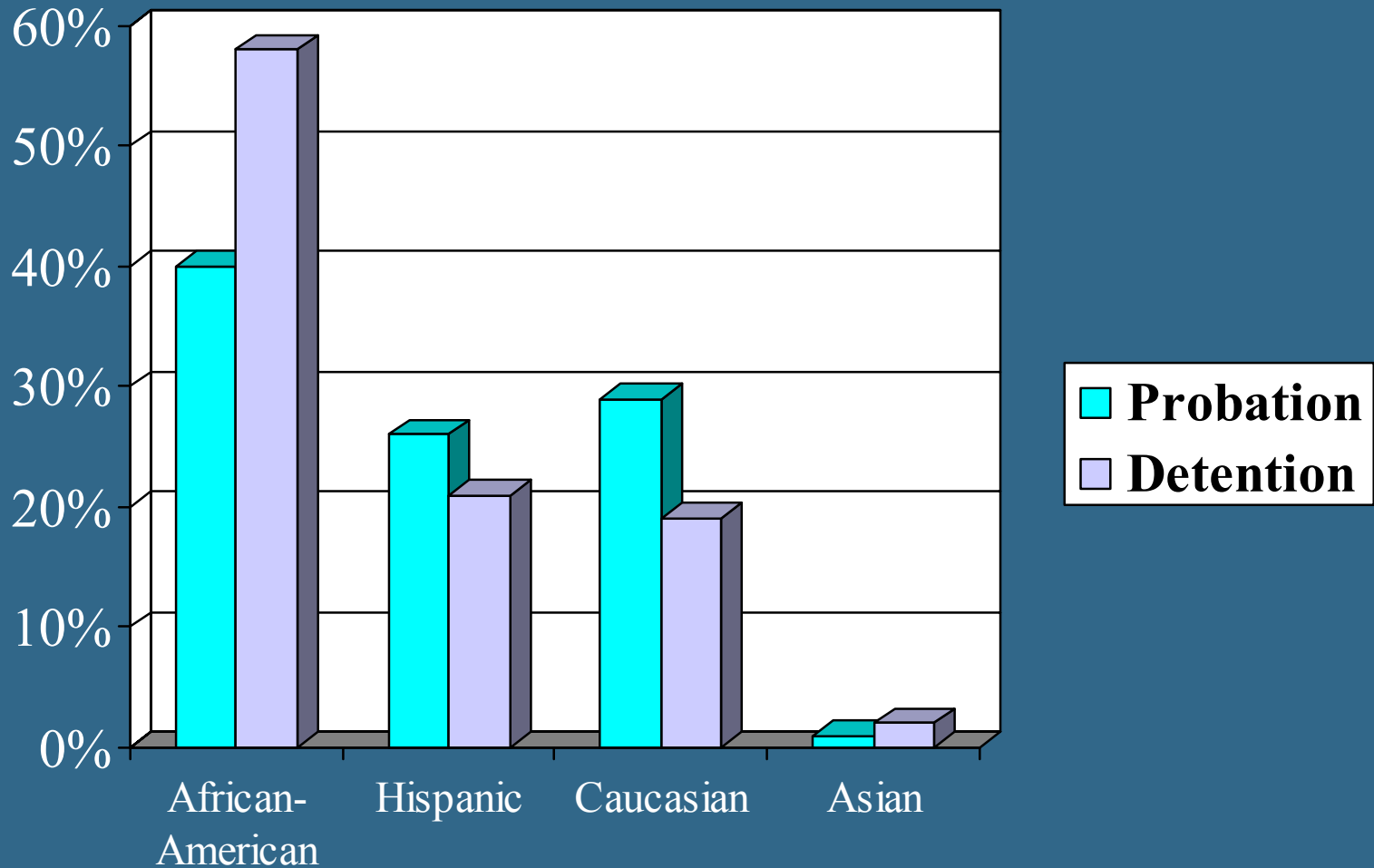
Of juveniles transferred to adult court, Black and Hispanic juveniles were more likely than white juveniles to:

- Be detained before disposition (Hispanic 54%; Black 35%; White 13%)

- Receive jail/prison time from adult court (Black 54%; Hispanic 38%; White 14%)

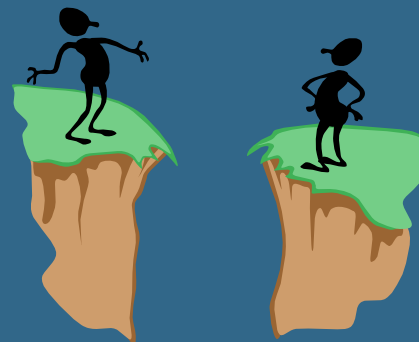
Source: "Bridgeport Juvenile Justice Report," RYASAP, 2002.

# Bridgeport Juvenile Court



Source: "Bridgeport Juvenile Justice Report," RYASAP, 2002.

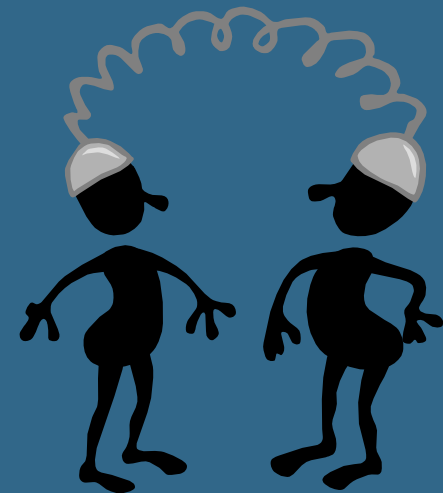
## 4. Disjointed Youth Services



- Need comprehensive, coordinated statewide plan that addresses the appropriate intersection of DCF, CSSD, and mental health systems for JJ youth
- Need cohesive, cross-community service delivery system
- Identify what existing wraparound services are available, utilized, and effective

# Possibly Related Bridgeport Initiatives

- SAMHSA, Gear Up, Public Allies, Detention Center Resolution, Jim Casey Multi-Year Foster Care Grant
- DCF Regional Re-alignment
- What Else?



# What Exists

- Our Piece of the Pie provides a nationally recognized model for effective juvenile justice reentry, already supported by DCF, DOL, OWC
- “Harmonic convergence” of system resources and supports: WIA funding and Jim Casey
- No need to create a new system—we just need to coordinate the pieces



# Broadscale Systems Reform

	Existing Life Skills/Job Training			Jim Casey	WIA
<b>Work Experience</b>	Youth Business	Structured Work	Entry-level Work	UPS/STC	Summer Jobs
<b>Adult Mentors</b>	Entrepreneurs	Supervisor	Supervisor	Community Board	Adult Mentoring
<b>Youth Role Models</b>	College Interns	Youth Assistant	Youth Assisnat	Parents/ Case Mgrs.	Leadership Dev.
<b>Support Staff</b>	Youth Dev. Trainer	Job Coach	Job Coach	Youth Diarist	Guidance/ Counseling
<b>Steering Committee</b>	Staff	Employers	Employers	Youth Board	
<b>Advisory Committee</b>	Lead Agency	Lead Agency	Casey/UPS	Community Board	Youth Councils
<b>Integrated Learning</b>	Life Skills	Work Skills	OTJ Training	Financial Literacy	Tutoring, Job Training
<b>Incentives</b>	Stipend/ Awards	Stipend/ Awards	Wages/ Awards	Opportunity Passport	Wages

# Likely Program Components

- Education
- Employment
- Physical/Mental Health/  
Substance Abuse Services
- Technology
- Restorative Justice (civic participation)
- Adult Presence (mentoring)
- Housing
- Recreation/Afterschool Activities
- Youth Engagement/ Leadership



# Our Pilot Design vs. National Models' Designs

	Education	Employment	Physical/ Mental Health	Technology
Missouri	X	X	X	
Wisconsin	X		X	
Oregon	X		X	

Sources: "Deschutes County Community Youth Investment Project," 2002

"Reinvesting in Youth: A Community Partnership," 1998. [www.reclaimingfutures.org](http://www.reclaimingfutures.org)

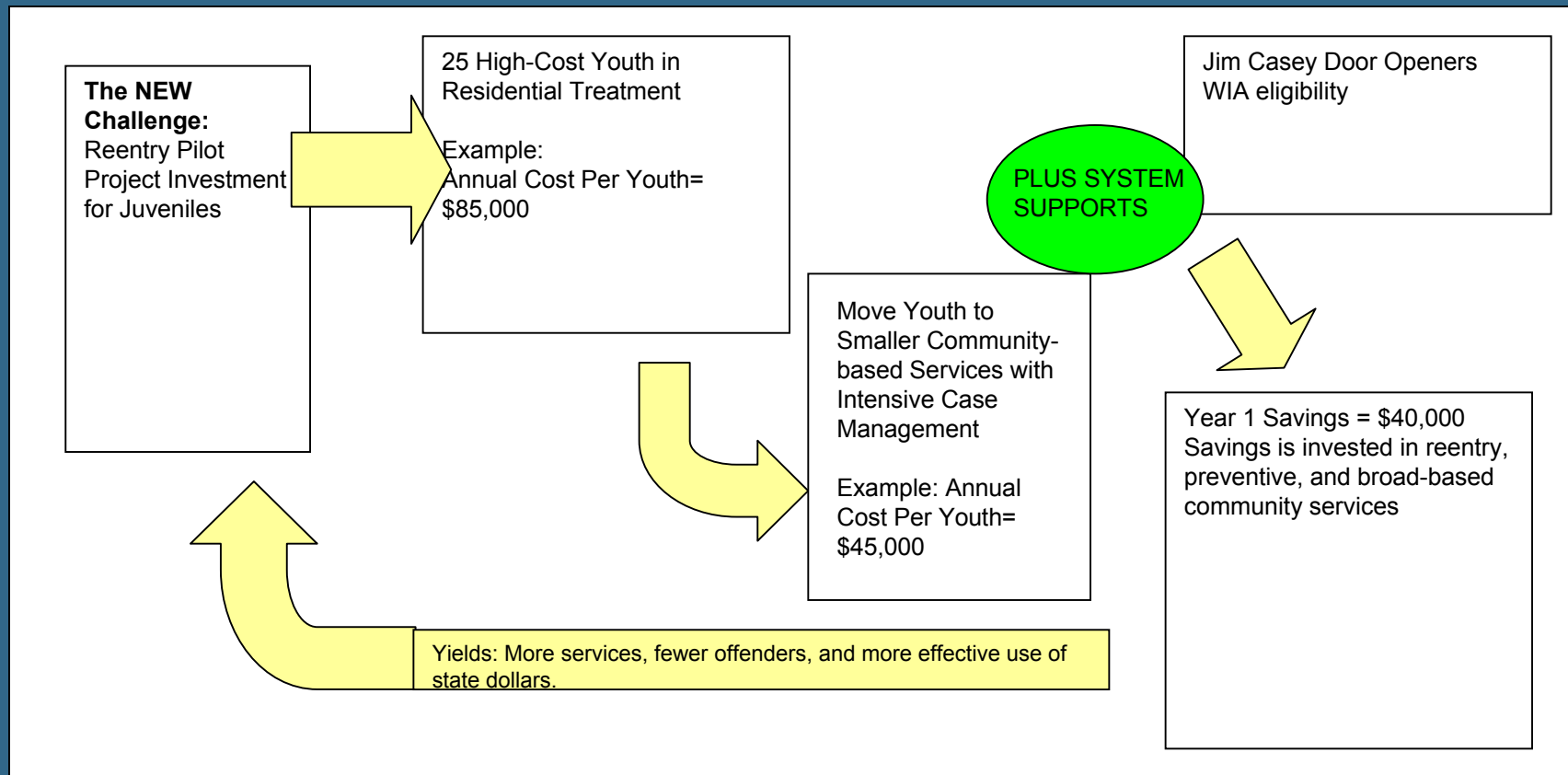
"Juvenile Justice at a Crossroads." Advocasey, Volume 5, No. 1, Spring 2003.



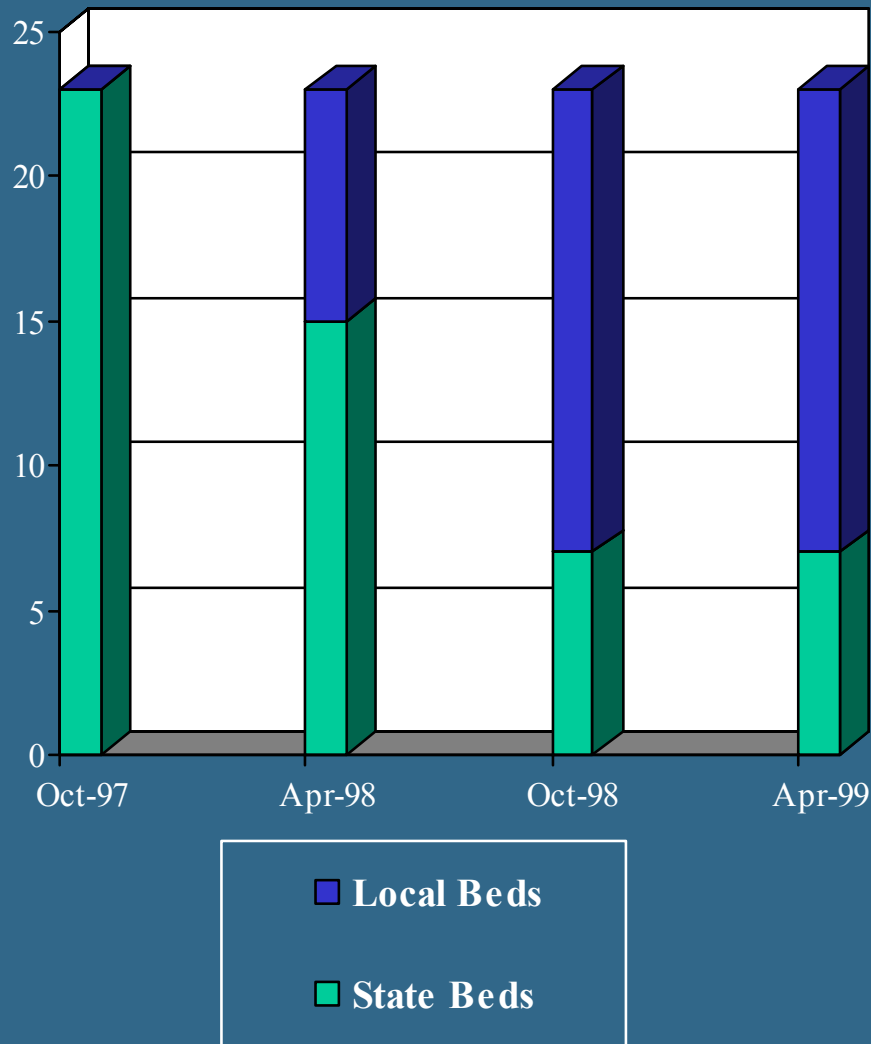
# Our Pilot Design vs. National Models' Designs

	Restorative Justice	Mentoring	Housing	Recreation/ Afterschool	Youth Leadership
Missouri		X			
Wisconsin		X	X		
Oregon		X			

# Broadscale Systems Reform



# One Model: Seattle



The county earns the flexibility to reinvest funds to benefit local children and families by successfully assuming a state responsibility and containing costs. If the county uses state bed space in excess of the bed cap, it pays for those beds out of local resources.

Source: "Reinvesting in Youth: A Community Partnership," 1998.

[www.reclaimingfutures.org](http://www.reclaimingfutures.org)

# Pilot Population



*25 DCF high-end cost residential*

*Placement youth who could/will be returned to the  
Greater Bridgeport region*

*Questions: Clinical history? Current DCF case  
relationship? Projected return date if no pilot?  
Current service needs? Youth needs match to  
existing community service capacity?*

# Potential Pilot Resources

- Current DCF residential fiscal expenditures
- Current DCF case management staffing
- Available DCF community service supports
- External Resources: WIA eligibility and employment supports; Youth Business Center programs; LEA special education resources; CT Juvenile Justice support; Jim Casey Bridgeport initiative pilot
- Street Smart Ventures already on the ground in Bridgeport developing youth work and business models

# Pilot – Year 1

Month 1--Identify Target Population

Month 2--Identify internal and cross-agency policy, regulatory, data, financial, training, and personnel issues

Month 3--Formalize local service agreements and DCF initiative oversight

Months 4-6--Engage community in kick-off

Year 1--Operate and evaluate

Evaluation of Results...

Planning for Sustainability...

Next Steps...

*“The future holds perils and possibilities. To be paralyzed by the scope and speed of change in an increasingly diverse world is to silently contribute to a desolate scenario in which youth without ready access to preparation for work, civic engagement, or personal life will be left behind. The specific consequences of having large numbers of youth left behind are unforeseen, but history has shown that large gaps between haves and have nots seriously undermine the universal ideals of economic growth and humanistic social order.”*

**Pittman, Diversi, and Ferber. “Social Policy Supports for Adolescence in the Twenty-First Century: Framing Questions.” *Journal of Research on Adolescence*, 12(1), 149-158. 2002**



# Sources

**“A Reassessment of Minority Overrepresentation,” JJAC of Connecticut, June 2001. [www.opm.state.ct.us](http://www.opm.state.ct.us)**

**“Bridgeport Juvenile Justice Report,” RYASAP, 2002.**

**Court Support Services Division, August 2003.**

**Department of Children and Families, August 2003.**

**“Deschutes County Community Youth Investment Project,” 2002.**

**“Juvenile Justice at a Crossroads.” Advocasey, Volume 5, No. 1, Spring 2003.**

**“Reinvesting in Youth: A Community Partnership,” 1998.  
[www.reclaimingfutures.org](http://www.reclaimingfutures.org)**

**“State of Connecticut Juvenile Justice Recidivism Outcomes Evaluation,”  
CT Policy and Economic Council, July 2002.**