

Testimony Regarding the Potential for Profiling in Connecticut's Towns

Orlando J. Rodriguez, M.A.
U.S. Commission on Civil Rights
December 6, 2011

Members of the U.S. Commission on Civil Rights:

I am a Senior Policy Fellow with Connecticut Voices for Children (Connecticut Voices), a research-based public education and advocacy organization that works statewide to promote the well-being of Connecticut's children, youth, and families. I am here today at the request of the U.S. Commission on Civil Rights

I have created a composite demographic measure called the Non-European Residents Index (NERI). It is one possible alternative for capturing the *potential* for profiling in Connecticut's 169 towns by quantifying the concentration of non-European residents in a given town, and the change in their concentration over the past 10 years.^{1,2} The NERI does not incorporate data on police detentions, arrests, or any proxy for profiling. As such, the NERI is a purely demographic measure of the non-European population residing in a town. Use of the NERI infers the relative concentration of non-Europeans in a town as a proxy for *potential* profiling. Consequently, the NERI measures the population that *could* be subject to profiling and is one possible indicator of the potential for profiling.

The NERI cannot account for potential profiling in towns where minority populations (non-Europeans) are transient (seasonal workers) or when minorities are traveling through a town in route to another destination.

Map 1 shows the concentration of non-European residents in Connecticut towns in 2009/2010.³ The highest concentrations are in urban centers and surrounding towns, as well as towns with a college or university. The highest concentrations are in the following towns: Hartford, Bridgeport, Bloomfield, Stamford, New Haven, East Hartford, Danbury, Windsor, Norwalk, Waterbury, New Britain, and New London.

¹ See Appendix B for NERI values and U.S. Census Bureau variables.

² See Appendix C for methodology.

³ See Appendix A for map with town names.

Map 2 shows the change in concentration of non-European residents between 2000 and 2009/2010. This is the change in the NERI during the 2000 to 2009/2010 period. Towns with the highest increase in the concentration of non-Europeans are: Norwich, East Hartford, Manchester, Windsor, Stratford, Rocky Hill, Meriden, Bridgeport, Stamford, West Haven, Waterbury, Danbury, East Windsor, Ansonia, New Britain, Windsor Locks, Derby, Deep River, and Hamden.

Map 3 shows the percentage change (relative change in the NERI) in the concentration of non-European residents between 2000 and 2009/2010. This is a good indicator for towns with small populations that may have experienced a small, but locally significant, increase in non-European residents. Towns with the highest percentage increase in the concentration of non-Europeans are: Pomfret, Sharon, Deep River, Salem, Union, Oxford, North Stonington, and Middlefield.

As previously stated, the NERI is one possible indicator of the *potential* for profiling. It does not capture the practices of local police towards minority populations nor the level of acceptance by long-term residents for new minority populations.

Thank you for this opportunity to testify regarding profiling in Connecticut.

Map 1: Town Non-European Residents in 2009/2010

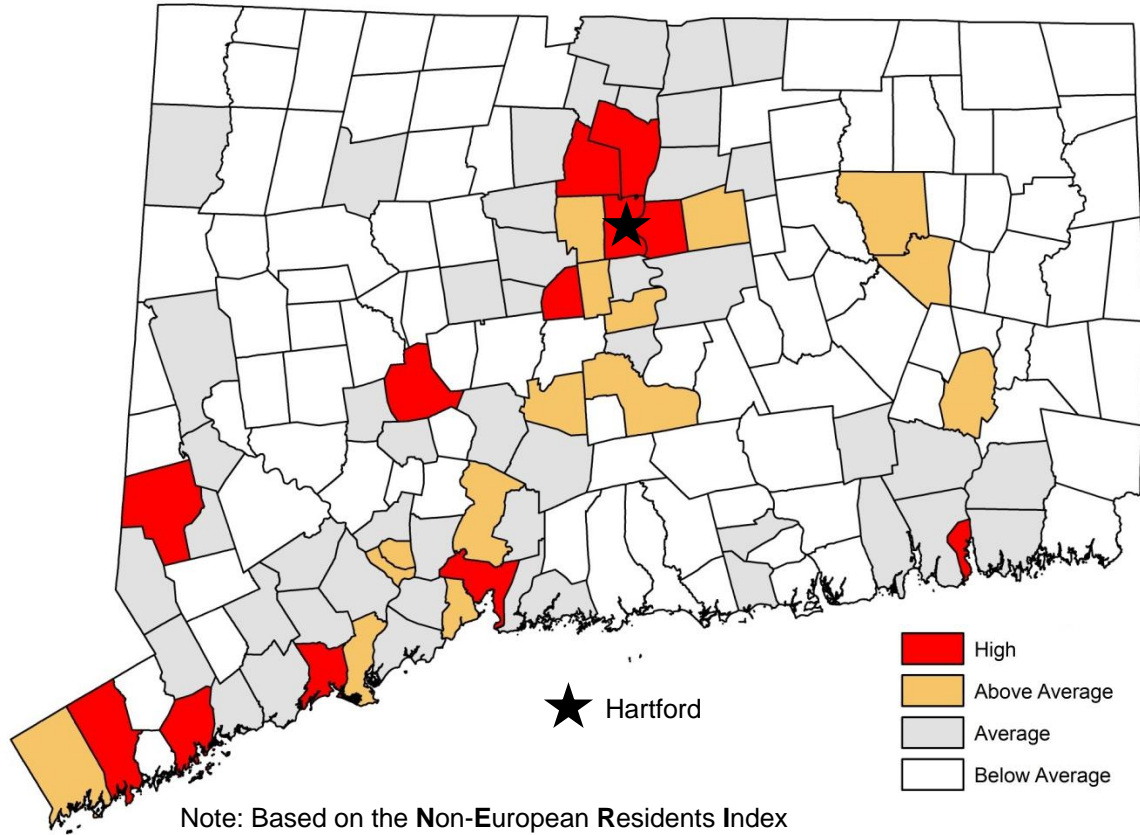
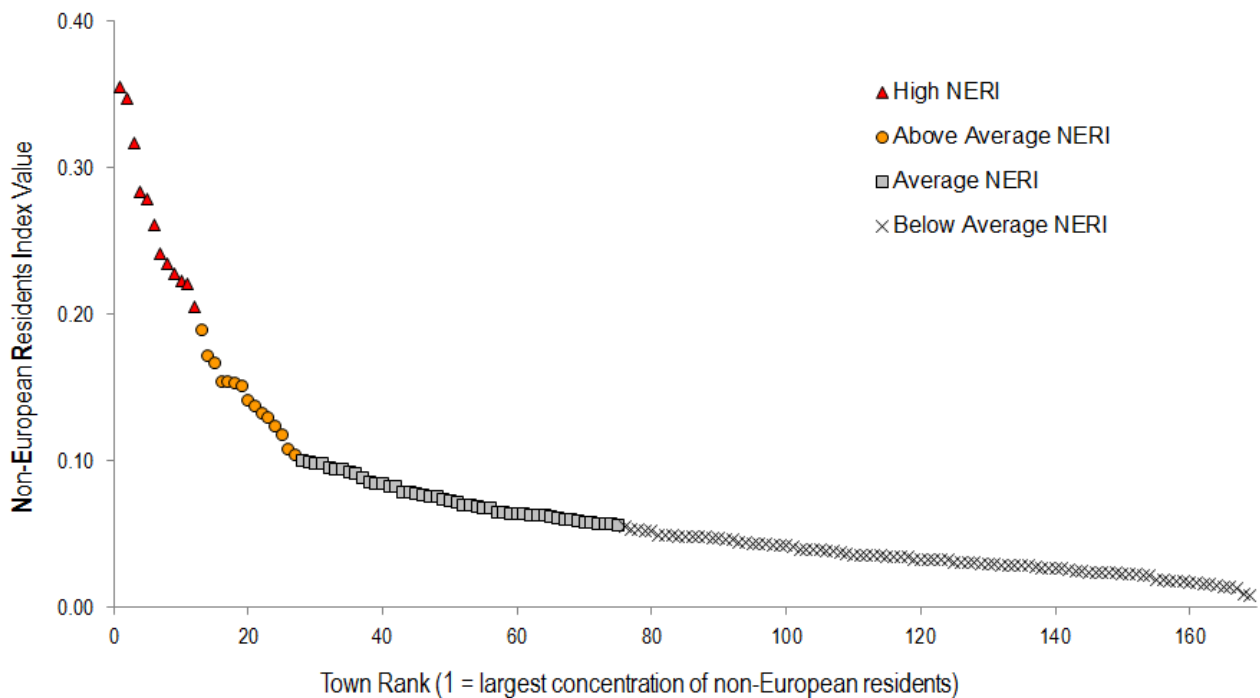


Chart 1: Non-European Residents Index in 2009/2010



Map 2: Increase in Town Non-European Residents
2000 to 2009/2010

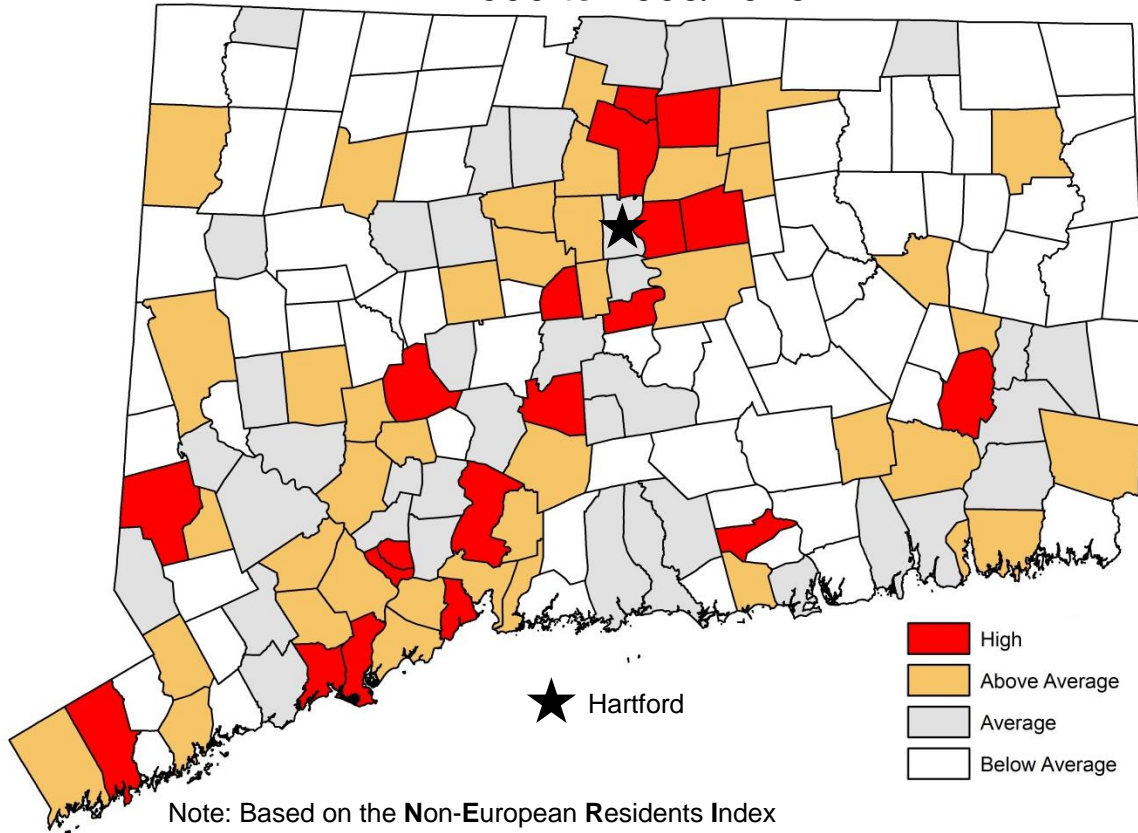
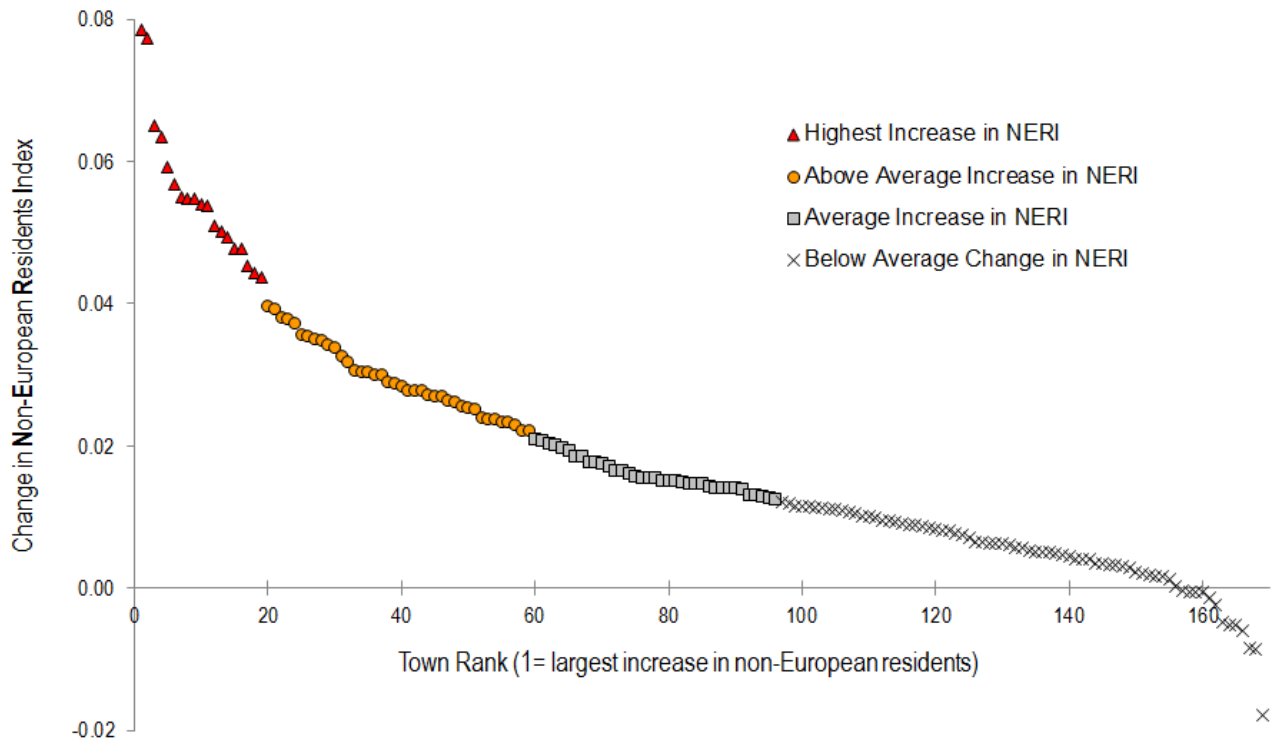


Chart 2: Increase in Non-European Residents Index
2000 to 2009/2010



Map 3: Percent Increase in Town Non-European Residents
2000 to 2009/2010

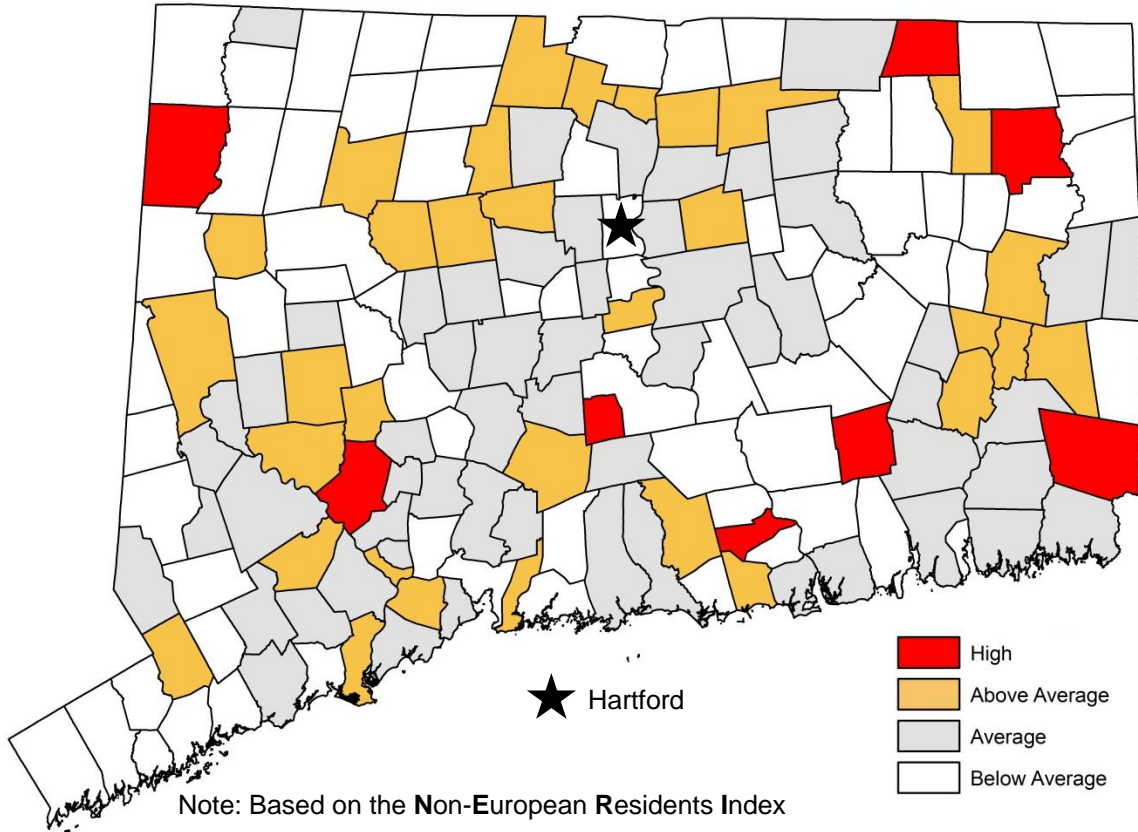
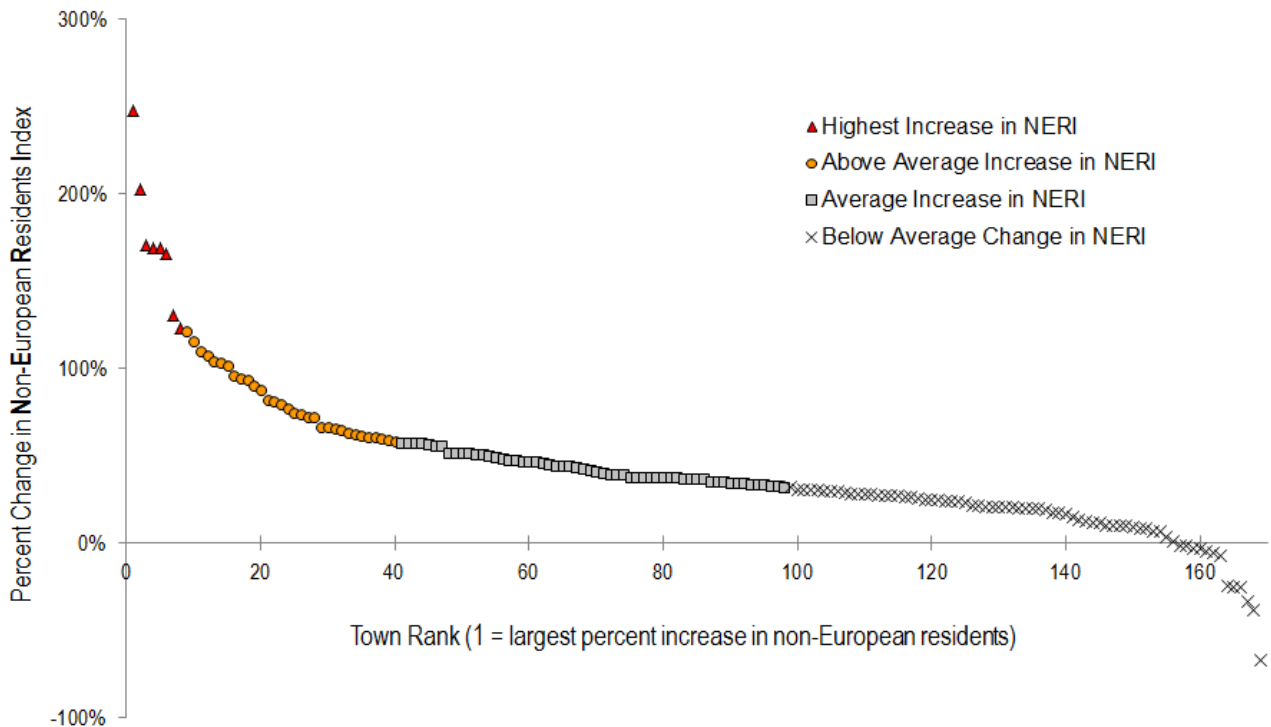


Chart 3: Percent Increase in Non-European Residents Index
2000 to 2009/2010



Appendix A: Map of Connecticut Towns



Appendix B: Non-European Residents Index (NERI) Values

Town	Percent Change in NERI from 2000 to 2009/2010	Change in NERI from 2000 to 2009/2010	2000 Non-European Residents Index (max = 1.0)	Census 2000				2010 Non-European Residents Index (max = 1.0)	ACS 2005-2009		Census 2010	
				% Naturalized	% Non-European Foreign Born	% Hispanic or Black(NH)	% Asian(NH)		% Naturalized	% Non-European Foreign Born	% Hispanic or Black(NH)	% Asian(NH)
Andover	26%	0.006	0.022	2.2%	1.4%	2.5%	0.5%	0.027	3.2%	1.3%	2.6%	1.1%
Ansonia	56%	0.049	0.089	6.2%	3.7%	15.6%	1.1%	0.138	6.3%	6.0%	27.3%	1.9%
Ashford	8%	0.002	0.027	3.5%	0.5%	2.9%	1.0%	0.029	1.8%	1.0%	4.5%	1.3%
Avon	60%	0.028	0.046	5.1%	3.2%	2.5%	3.0%	0.074	5.7%	5.3%	4.8%	6.3%
Barkhamsted	-34%	-0.005	0.014	2.1%	0.9%	0.9%	0.4%	0.010	0.2%	0.2%	1.8%	0.6%
Beacon Falls	38%	0.015	0.039	5.0%	2.8%	2.8%	1.0%	0.053	5.3%	3.1%	6.4%	1.2%
Berlin	34%	0.013	0.039	6.1%	2.0%	1.8%	1.6%	0.052	5.7%	3.4%	3.9%	2.7%
Bethany	34%	0.014	0.041	4.4%	2.5%	3.8%	1.5%	0.055	5.1%	2.2%	4.3%	4.8%
Bethel	37%	0.027	0.072	7.1%	6.1%	4.9%	3.5%	0.099	6.8%	9.1%	9.3%	4.4%
Bethlehem	35%	0.006	0.018	2.9%	0.8%	0.9%	0.8%	0.024	3.2%	1.4%	2.1%	0.5%
Bloomfield	12%	0.034	0.284	11.0%	15.8%	57.0%	1.3%	0.317	12.5%	19.0%	61.8%	1.9%
Boiton	11%	0.003	0.030	4.4%	1.7%	2.3%	0.5%	0.033	3.8%	0.7%	4.0%	1.4%
Bozrah	32%	0.006	0.018	2.0%	0.6%	2.2%	0.5%	0.024	1.3%	0.7%	4.6%	0.5%
Branford	24%	0.011	0.046	4.0%	3.2%	3.9%	2.7%	0.057	3.1%	4.4%	5.9%	3.6%
Bridgeport	19%	0.055	0.293	7.7%	15.7%	61.2%	3.2%	0.348	9.1%	21.5%	70.4%	3.3%
Bridgewater	58%	0.010	0.017	2.0%	0.9%	1.4%	0.7%	0.027	3.3%	1.6%	2.3%	0.9%
Bristol	45%	0.024	0.053	4.4%	2.5%	7.7%	1.5%	0.077	4.4%	3.8%	13.0%	1.9%
Brookfield	49%	0.021	0.042	3.9%	3.1%	3.1%	2.5%	0.063	5.4%	4.5%	5.3%	3.6%
Brooklyn	4%	0.001	0.034	2.3%	1.2%	6.0%	0.5%	0.035	1.6%	1.0%	6.7%	1.0%
Burlington	88%	0.019	0.021	2.8%	0.9%	1.9%	0.7%	0.040	5.2%	2.0%	3.2%	1.5%
Canaan	25%	0.005	0.020	3.0%	1.0%	1.9%	0.2%	0.025	3.9%	1.1%	2.2%	0.2%
Canterbury	110%	0.010	0.009	0.9%	0.2%	1.4%	0.3%	0.020	1.9%	0.5%	2.8%	0.7%
Canton	67%	0.012	0.019	2.0%	1.1%	1.8%	0.7%	0.031	3.4%	1.1%	3.4%	1.5%
Chaplin	10%	0.002	0.021	2.8%	0.4%	2.7%	0.4%	0.023	0.9%	0.0%	5.9%	0.1%
Cheshire	33%	0.020	0.062	4.3%	3.4%	8.3%	2.6%	0.083	4.8%	5.5%	9.4%	5.0%
Chester	27%	0.007	0.024	2.7%	1.4%	2.4%	0.8%	0.031	2.7%	3.1%	2.7%	0.8%
Clinton	30%	0.011	0.036	2.4%	2.9%	4.5%	1.1%	0.047	3.2%	3.6%	5.6%	1.8%
Colchester	28%	0.008	0.027	3.0%	1.3%	3.3%	0.6%	0.035	2.8%	1.5%	4.8%	1.4%
Colebrook	-67%	-0.018	0.027	3.0%	1.2%	3.1%	0.6%	0.009	0.6%	0.0%	1.4%	0.6%
Columbia	-1%	0.000	0.033	4.6%	2.6%	2.1%	0.7%	0.033	3.4%	2.2%	3.5%	0.7%
Cornwall	-5%	-0.001	0.027	4.0%	1.9%	1.6%	0.7%	0.026	3.7%	1.0%	2.5%	0.6%
Coventry	38%	0.009	0.024	3.2%	1.1%	2.2%	0.6%	0.033	3.6%	1.8%	3.6%	0.8%
Cromwell	15%	0.008	0.055	5.6%	3.4%	6.2%	1.2%	0.063	4.6%	2.4%	8.5%	3.3%
Danbury	27%	0.051	0.190	8.3%	21.2%	22.1%	5.4%	0.241	9.6%	24.9%	31.2%	6.7%
Darien	19%	0.008	0.043	3.9%	4.1%	2.6%	2.4%	0.052	4.9%	3.1%	4.1%	3.6%
Deep River	171%	0.044	0.026	1.1%	0.8%	5.1%	0.8%	0.070	3.7%	8.6%	7.6%	1.1%
Derby	58%	0.045	0.078	5.7%	4.8%	11.2%	1.7%	0.123	6.2%	7.2%	21.1%	2.5%
Durham	51%	0.012	0.024	2.3%	1.4%	2.5%	0.8%	0.036	3.7%	2.8%	2.6%	1.6%
East Granby	116%	0.031	0.026	2.1%	1.9%	2.8%	1.1%	0.057	5.6%	3.7%	5.4%	2.5%
East Haddam	30%	0.004	0.014	2.0%	0.0%	1.8%	0.4%	0.018	1.5%	0.4%	2.8%	0.7%
East Hampton	10%	0.003	0.031	1.8%	1.5%	3.6%	2.4%	0.034	3.0%	2.1%	3.7%	1.5%
East Hartford	42%	0.077	0.184	7.8%	10.0%	33.5%	4.0%	0.261	8.3%	14.5%	50.0%	5.7%
East Haven	77%	0.037	0.048	4.0%	2.9%	5.7%	1.9%	0.086	4.4%	5.1%	12.9%	3.3%
East Lyme	20%	0.013	0.063	2.7%	3.0%	10.5%	2.8%	0.076	3.1%	4.0%	10.4%	5.4%
East Windsor	121%	0.050	0.041	2.3%	2.0%	6.1%	2.0%	0.092	4.0%	6.5%	12.4%	4.6%
Eastford	72%	0.011	0.016	2.2%	0.4%	1.7%	0.4%	0.027	3.3%	1.2%	2.7%	1.0%
Easton	41%	0.017	0.043	6.2%	2.7%	2.0%	2.0%	0.061	7.8%	3.7%	3.6%	3.2%
Ellington	94%	0.023	0.025	2.3%	1.6%	2.3%	1.2%	0.048	3.2%	3.6%	4.4%	3.3%
Enfield	31%	0.015	0.049	2.4%	2.1%	9.0%	1.3%	0.065	2.6%	2.3%	12.6%	1.9%
Essex	27%	0.006	0.024	3.4%	1.2%	2.0%	0.5%	0.030	3.3%	1.2%	3.3%	1.2%

Town	Percent Change in NERI from 2000 to 2009/2010	Change in NERI from 2000 to 2009/2010	2000 Non-European Residents Index (max = 1.0)	Census 2000				2010 Non-European Residents Index (max = 1.0)	ACS 2005-2009		Census 2010	
				% Naturalized	% Non-European Foreign Born	% Hispanic or Black(NH)	% Asian(NH)		% Naturalized	% Non-European Foreign Born	% Hispanic or Black(NH)	% Asian(NH)
Fairfield	38%	0.018	0.047	5.2%	3.4%	3.4%	2.0%	0.064	4.8%	4.1%	6.8%	3.7%
Farmington	45%	0.029	0.065	7.8%	4.4%	3.7%	3.7%	0.094	8.5%	5.7%	6.1%	8.0%
Franklin	38%	0.005	0.012	1.5%	0.4%	1.8%	0.1%	0.017	1.2%	0.0%	2.8%	1.1%
Glastonbury	48%	0.025	0.053	4.5%	4.0%	3.9%	3.4%	0.078	5.9%	4.6%	6.1%	6.8%
Goshen	30%	0.006	0.020	2.8%	0.9%	1.7%	0.7%	0.026	2.4%	1.8%	2.6%	1.2%
Granby	59%	0.012	0.020	2.3%	0.9%	1.9%	0.7%	0.031	3.5%	2.2%	2.8%	0.9%
Greenwich	25%	0.026	0.104	7.9%	10.1%	7.9%	5.2%	0.130	8.6%	12.0%	11.8%	6.6%
Griswold	66%	0.015	0.023	1.7%	1.1%	3.3%	0.8%	0.038	2.7%	1.7%	4.9%	2.2%
Groton	37%	0.026	0.072	3.0%	3.7%	11.5%	3.3%	0.098	3.3%	4.9%	15.1%	6.1%
Guilford	38%	0.013	0.035	3.5%	2.3%	3.0%	1.6%	0.048	4.4%	3.3%	4.2%	2.4%
Haddam	27%	0.005	0.019	1.8%	0.9%	2.1%	0.8%	0.024	2.1%	0.9%	2.7%	1.4%
Hamden	40%	0.044	0.111	4.9%	5.3%	19.4%	3.5%	0.154	5.9%	6.8%	28.2%	5.4%
Hampton	8%	0.002	0.020	2.3%	0.9%	2.0%	0.9%	0.022	1.8%	1.2%	2.6%	0.8%
Hartford	6%	0.021	0.334	8.3%	14.0%	76.5%	1.6%	0.355	7.9%	17.2%	78.9%	2.7%
Hartland	22%	0.003	0.014	2.0%	0.7%	0.7%	0.6%	0.017	2.0%	1.2%	1.0%	0.8%
Harwinton	82%	0.015	0.018	2.7%	1.2%	1.0%	0.5%	0.033	4.0%	3.2%	1.6%	0.9%
Hebron	38%	0.006	0.017	1.9%	0.9%	1.6%	0.6%	0.023	2.3%	0.9%	2.8%	1.0%
Kent	17%	0.005	0.028	2.9%	1.8%	3.1%	0.7%	0.033	3.4%	0.6%	4.3%	1.6%
Killingly	28%	0.008	0.028	2.1%	1.1%	3.5%	1.6%	0.035	3.2%	1.2%	4.4%	1.8%
Killingworth	96%	0.016	0.017	1.6%	1.0%	1.6%	0.8%	0.033	3.8%	2.1%	2.9%	1.1%
Lebanon	16%	0.003	0.021	2.5%	1.1%	2.4%	0.3%	0.024	2.6%	0.5%	3.7%	0.5%
Ledyard	37%	0.016	0.042	2.9%	2.5%	5.2%	2.1%	0.058	2.6%	2.7%	8.6%	3.5%
Lisbon	94%	0.014	0.015	2.4%	0.8%	0.9%	0.4%	0.029	2.9%	1.7%	2.8%	1.4%
Litchfield	23%	0.005	0.021	2.5%	1.2%	2.2%	0.5%	0.026	3.2%	1.2%	2.6%	0.9%
Lyme	10%	0.002	0.018	2.0%	0.8%	1.2%	1.3%	0.019	2.2%	0.8%	1.8%	1.0%
Madison	52%	0.014	0.027	3.2%	1.6%	1.7%	1.7%	0.042	4.2%	3.4%	2.6%	2.2%
Manchester	72%	0.065	0.090	4.1%	5.0%	14.6%	3.1%	0.155	6.4%	8.7%	23.3%	7.9%
Mansfield	13%	0.012	0.096	4.3%	8.4%	9.0%	7.1%	0.108	5.0%	8.0%	11.1%	8.3%
Marlborough	36%	0.010	0.027	4.1%	1.5%	1.8%	0.7%	0.036	3.8%	1.6%	3.9%	1.6%
Meriden	47%	0.055	0.117	3.2%	3.6%	26.8%	1.3%	0.171	4.7%	7.6%	37.1%	2.1%
Middlebury	90%	0.029	0.032	4.7%	2.0%	1.6%	1.3%	0.061	9.1%	1.7%	3.6%	3.8%
Middlefield	123%	0.020	0.016	1.9%	0.6%	2.0%	0.4%	0.036	3.2%	2.8%	3.6%	1.2%
Middletown	21%	0.020	0.098	4.9%	4.7%	17.1%	2.6%	0.118	4.4%	5.9%	20.3%	4.8%
Milford	43%	0.023	0.053	4.5%	4.0%	5.2%	2.3%	0.076	4.7%	5.4%	7.6%	5.3%
Monroe	60%	0.024	0.039	4.9%	1.7%	3.7%	1.5%	0.063	6.7%	4.1%	6.0%	2.1%
Montville	58%	0.035	0.060	2.8%	2.8%	10.6%	1.9%	0.095	3.5%	5.9%	12.8%	6.4%
Morris	-39%	-0.009	0.022	3.0%	1.4%	1.6%	0.8%	0.014	0.8%	0.0%	2.6%	0.8%
Naugatuck	48%	0.030	0.063	5.3%	4.7%	7.2%	1.7%	0.093	5.6%	5.6%	13.7%	3.0%
New Britain	28%	0.048	0.173	7.9%	5.2%	36.5%	2.3%	0.221	8.8%	7.4%	47.7%	2.3%
New Canaan	10%	0.005	0.044	4.7%	3.4%	2.8%	2.3%	0.048	4.1%	3.2%	3.9%	3.4%
New Fairfield	27%	0.011	0.042	5.8%	2.3%	3.2%	1.3%	0.053	5.5%	3.3%	5.4%	1.7%
New Hartford	1%	0.000	0.022	2.8%	1.2%	1.9%	0.7%	0.022	2.4%	1.1%	2.0%	1.1%
New Haven	13%	0.033	0.246	3.8%	8.7%	57.5%	3.9%	0.279	4.9%	13.4%	60.8%	4.5%
New London	24%	0.039	0.166	4.0%	6.9%	36.8%	2.1%	0.205	4.7%	10.8%	43.6%	2.5%
New Milford	61%	0.026	0.042	3.4%	3.2%	4.1%	1.9%	0.068	4.9%	5.2%	7.6%	2.7%
Newington	52%	0.036	0.069	8.6%	3.7%	5.7%	2.8%	0.105	8.9%	6.0%	10.8%	5.7%
Newtown	46%	0.016	0.034	2.7%	2.0%	4.0%	1.4%	0.049	4.4%	2.8%	5.3%	2.3%
Norfolk	-24%	-0.005	0.021	3.0%	1.4%	1.4%	0.5%	0.016	1.4%	0.3%	2.5%	0.6%
North Branford	7%	0.002	0.028	3.3%	1.1%	3.0%	0.9%	0.029	2.5%	0.6%	4.2%	1.6%
North Canaan	57%	0.014	0.025	1.4%	2.5%	3.4%	0.1%	0.039	0.0%	4.5%	7.1%	0.2%
North Haven	48%	0.023	0.049	3.9%	3.5%	4.1%	3.3%	0.073	4.8%	5.6%	6.7%	4.7%
North Stonington	130%	0.024	0.018	1.6%	0.9%	2.0%	1.1%	0.042	4.3%	3.6%	3.4%	1.4%

Town	Percent Change in NERI from 2000 to 2009/2010	Change in NERI from 2000 to 2009/2010	2000 Non-European Residents Index (max = 1.0)	Census 2000				2010 Non-European Residents Index (max = 1.0)	ACS 2005-2009		Census 2010	
				% Naturalized	% Non-European Foreign Born	% Hispanic or Black(NH)	% Asian(NH)		% Naturalized	% Non-European Foreign Born	% Hispanic or Black(NH)	% Asian(NH)
Norwalk	20%	0.038	0.190	8.7%	14.8%	30.4%	3.2%	0.228	8.9%	17.1%	37.7%	4.7%
Norwich	104%	0.078	0.075	3.7%	4.2%	12.5%	2.1%	0.154	5.2%	11.2%	22.1%	7.6%
Old Lyme	44%	0.009	0.020	2.7%	1.0%	1.2%	1.1%	0.029	2.9%	0.9%	2.9%	2.0%
Old Saybrook	52%	0.015	0.029	2.7%	1.4%	2.9%	1.7%	0.044	3.8%	2.7%	4.3%	2.4%
Orange	74%	0.035	0.048	5.2%	3.1%	2.2%	3.8%	0.083	6.8%	6.3%	4.3%	7.5%
Oxford	166%	0.030	0.018	1.9%	0.5%	2.3%	0.7%	0.049	5.1%	3.2%	4.7%	1.5%
Plainfield	36%	0.008	0.023	2.0%	0.8%	3.4%	0.6%	0.031	2.2%	0.8%	5.3%	1.0%
Plainville	9%	0.005	0.060	7.1%	3.4%	5.7%	1.7%	0.065	6.5%	1.8%	9.0%	2.1%
Plymouth	58%	0.009	0.016	2.0%	0.3%	2.0%	0.4%	0.025	1.9%	1.1%	3.8%	0.8%
Pomfret	248%	0.030	0.012	0.6%	0.4%	1.9%	0.7%	0.043	3.4%	5.3%	2.5%	1.6%
Portland	34%	0.011	0.033	3.3%	1.8%	4.3%	0.5%	0.044	4.0%	3.0%	5.3%	1.0%
Preston	57%	0.014	0.025	2.6%	1.8%	2.0%	1.1%	0.040	2.5%	3.5%	3.8%	2.1%
Prospect	30%	0.010	0.033	4.5%	1.4%	3.3%	0.7%	0.043	5.2%	1.9%	5.2%	0.8%
Putnam	21%	0.004	0.019	2.0%	0.3%	3.1%	0.4%	0.023	1.3%	0.6%	4.1%	1.0%
Redding	25%	0.009	0.037	3.9%	3.2%	2.2%	1.8%	0.046	5.3%	3.2%	3.2%	2.1%
Ridgefield	40%	0.017	0.042	4.6%	3.4%	2.5%	2.1%	0.059	5.5%	4.4%	4.5%	3.2%
Rocky Hill	75%	0.057	0.076	7.7%	4.6%	6.5%	4.0%	0.133	9.5%	11.6%	9.0%	9.8%
Roxbury	51%	0.013	0.026	3.1%	2.1%	1.5%	0.9%	0.039	6.7%	1.5%	2.7%	0.8%
Salem	169%	0.038	0.022	1.9%	1.3%	2.0%	1.5%	0.061	4.5%	6.6%	3.9%	3.1%
Salisbury	28%	0.009	0.031	2.7%	2.4%	3.1%	1.0%	0.039	4.1%	2.3%	4.3%	1.1%
Scotland	-25%	-0.006	0.024	3.0%	0.8%	2.8%	0.5%	0.018	0.8%	0.2%	3.9%	0.3%
Seymour	38%	0.016	0.041	3.5%	2.8%	4.4%	1.7%	0.057	4.8%	1.3%	8.8%	2.2%
Sharon	203%	0.040	0.020	1.6%	0.8%	2.9%	0.6%	0.059	6.1%	7.4%	3.6%	0.7%
Shelton	47%	0.025	0.054	6.0%	3.6%	4.5%	2.1%	0.079	7.5%	4.2%	8.1%	3.8%
Sherman	-26%	-0.008	0.032	5.5%	1.4%	2.2%	0.6%	0.024	3.4%	0.5%	2.5%	0.9%
Simsbury	42%	0.017	0.039	4.3%	2.7%	2.7%	2.1%	0.056	4.5%	3.8%	4.7%	3.8%
Somers	-7%	-0.005	0.074	2.7%	1.9%	17.0%	0.6%	0.069	2.1%	1.8%	15.9%	0.8%
South Windsor	52%	0.034	0.066	6.3%	4.6%	5.2%	3.7%	0.100	7.5%	6.6%	7.9%	8.1%
Southbury	66%	0.019	0.029	3.9%	1.7%	2.0%	1.2%	0.048	5.2%	3.2%	3.4%	2.7%
Southington	35%	0.011	0.032	4.3%	1.6%	2.8%	1.0%	0.044	4.3%	2.0%	4.7%	2.2%
Sprague	108%	0.022	0.021	1.2%	1.9%	1.8%	1.3%	0.043	1.6%	3.7%	6.4%	1.1%
Stafford	33%	0.007	0.021	1.9%	1.4%	2.2%	0.9%	0.028	2.0%	2.0%	3.5%	1.1%
Stamford	24%	0.055	0.229	11.0%	21.0%	31.6%	5.0%	0.284	13.0%	27.3%	36.9%	7.8%
Sterling	33%	0.003	0.010	1.1%	0.2%	1.5%	0.3%	0.013	0.4%	1.0%	1.8%	0.8%
Stonington	41%	0.010	0.025	3.1%	1.3%	1.9%	1.3%	0.036	3.5%	2.2%	3.2%	1.8%
Stratford	64%	0.059	0.092	5.3%	4.5%	16.3%	1.4%	0.151	7.0%	8.6%	27.4%	2.3%
Suffield	29%	0.015	0.053	2.9%	1.3%	10.8%	0.9%	0.068	3.1%	3.0%	13.1%	1.3%
Thomaston	-3%	-0.001	0.019	2.1%	0.9%	2.0%	0.5%	0.018	0.8%	0.9%	2.9%	0.7%
Thompson	31%	0.004	0.012	1.4%	0.5%	1.2%	0.3%	0.015	1.0%	0.6%	2.3%	0.7%
Tolland	45%	0.011	0.024	2.6%	1.5%	1.9%	1.2%	0.034	3.2%	1.5%	3.3%	2.3%
Torrington	63%	0.028	0.044	3.4%	2.8%	5.3%	1.8%	0.072	3.8%	4.8%	10.9%	2.1%
Trumbull	56%	0.032	0.057	6.2%	4.0%	4.5%	2.4%	0.089	7.5%	6.1%	8.7%	4.3%
Union	169%	0.019	0.011	1.9%	1.3%	0.0%	0.1%	0.030	3.1%	1.2%	4.1%	0.5%
Vernon	47%	0.027	0.057	3.5%	3.7%	7.4%	2.6%	0.085	4.7%	4.5%	11.9%	4.3%
Voluntown	-3%	0.000	0.014	2.0%	0.3%	1.7%	0.3%	0.014	1.0%	0.4%	2.0%	0.6%
Wallingford	62%	0.030	0.049	3.9%	3.5%	5.5%	1.7%	0.079	4.5%	6.5%	9.2%	3.4%
Warren	103%	0.015	0.014	2.2%	1.0%	0.4%	0.8%	0.029	2.7%	2.0%	2.7%	1.4%
Washington	-2%	-0.001	0.036	3.1%	3.5%	2.7%	1.6%	0.036	5.3%	0.2%	4.5%	0.7%
Waterbury	32%	0.054	0.169	5.7%	6.5%	37.0%	1.5%	0.223	6.8%	9.3%	49.0%	1.8%
Waterford	37%	0.018	0.047	4.4%	2.9%	4.5%	2.5%	0.065	4.9%	3.9%	7.0%	3.7%
Watertown	25%	0.010	0.039	5.7%	2.1%	2.6%	1.3%	0.048	5.3%	2.5%	5.0%	1.7%
West Hartford	33%	0.035	0.106	9.1%	7.1%	10.8%	4.8%	0.141	9.7%	9.9%	15.5%	7.3%

Town	Percent Change in NERI from 2000 to 2009/2010	Change in NERI from 2000 to 2009/2010	2000 Non-European Residents Index (max = 1.0)	Census 2000				2010 Non-European Residents Index (max = 1.0)	ACS 2005-2009		Census 2010	
				% Naturalized	% Non-European Foreign Born	% Hispanic or Black(NH)	% Asian(NH)		% Naturalized	% Non-European Foreign Born	% Hispanic or Black(NH)	% Asian(NH)
West Haven	40%	0.054	0.136	5.0%	8.0%	24.9%	2.9%	0.190	5.1%	11.6%	36.6%	3.7%
Westbrook	80%	0.028	0.035	4.2%	1.6%	3.2%	1.6%	0.063	5.0%	7.4%	5.1%	1.3%
Weston	20%	0.008	0.042	4.8%	2.8%	2.9%	1.9%	0.050	4.1%	3.4%	4.6%	2.9%
Westport	21%	0.011	0.053	5.9%	4.1%	3.4%	2.4%	0.064	6.5%	4.1%	4.6%	3.9%
Wethersfield	20%	0.014	0.071	9.6%	3.9%	6.1%	1.6%	0.085	9.1%	2.6%	11.0%	2.8%
Willington	-6%	-0.002	0.040	2.4%	3.7%	2.7%	3.0%	0.037	2.3%	1.5%	4.1%	3.3%
Wilton	63%	0.027	0.043	4.8%	3.3%	2.1%	2.7%	0.070	7.1%	5.5%	3.9%	4.5%
Winchester	17%	0.006	0.038	3.4%	3.0%	4.0%	0.9%	0.044	2.1%	3.8%	6.4%	0.9%
Windham	21%	0.028	0.138	3.7%	5.7%	30.8%	1.3%	0.167	2.5%	7.9%	38.2%	1.4%
Windsor	37%	0.063	0.171	7.7%	8.9%	31.6%	3.1%	0.235	10.7%	13.6%	41.6%	4.4%
Windsor Locks	102%	0.048	0.047	3.3%	3.4%	4.8%	2.6%	0.095	5.9%	7.9%	9.2%	5.3%
Wolcott	50%	0.016	0.031	4.1%	1.5%	3.0%	0.7%	0.047	4.8%	2.7%	5.2%	1.2%
Woodbridge	21%	0.017	0.082	10.0%	6.4%	3.0%	5.1%	0.099	8.2%	7.7%	5.1%	8.7%
Woodbury	81%	0.022	0.027	2.9%	2.0%	2.2%	1.1%	0.050	5.9%	4.3%	3.0%	1.7%
Woodstock	30%	0.004	0.013	2.0%	0.6%	1.0%	0.4%	0.017	1.9%	0.8%	1.9%	0.7%

Appendix C: Methodology Used to Calculate the Non-European Residents Index (NERI)

Data Sources from the U.S. Census Bureau

The Non-European Residents Index (NERI) is derived from U.S. Census Bureau data on (1) the percentage of the population that are naturalized citizens, (2) the percentage of the population that is foreign-born (not born in the U.S.) outside of Europe, (3) the percentage of the population that is Hispanic, (4) the percentage of the population that is non-Hispanic African American, (5) and the percentage of the population that is non-Hispanic Asian.

- 2000 Decennial Census
 - SF1 table P4
 - Total population
 - Hispanic population
 - Non-Hispanic African American population
 - Non-Hispanic Asian population
 - SF2 table PCT19
 - Population born in Asia, Oceania, Africa, and Latin America. Excludes Europe, Canada, Australia, and New Zealand.
 - SF2 table P21
 - Naturalized population
- 2005-2009 American Community Survey
 - Table B05006
 - Population born in Asia, Oceania, Africa, and Latin America. Excludes Europe, Canada, Australia, and New Zealand.
 - Table B05001
 - Naturalized population
- 2010 Decennial Census
 - SF1 table P9
 - Total population
 - Hispanic population
 - Non-Hispanic African American population
 - Non-Hispanic Asian population

Excluding Highly Correlated Variables

Eight variables were considered for inclusion in the NERI. Four variables were excluded because of their high correlation (≥ 0.8) to other variables. The variables %Hispanic and %African American(NH) were combined into the single variable %Hispanic or African American(NH). The table below lists the correlation coefficients for each pair of variables.

Included in NERI:	N	Y	N	Y	Y	N	N	Y
<i>Starting List of Potential Variables</i>	<i>% Born in PR or US Territory</i>	<i>% Naturalized</i>	<i>% Not A Citizen</i>	<i>% Non-European Foreign Born</i>	<i>% Hispanic or African American(NH)</i>	<i>% Hispanic</i>	<i>% African American (NH)</i>	<i>% Asian(NH)</i>
% Born in PR or US Territory	1.000							
% Naturalized	0.247	1.000						
% Not A Citizen	0.502	0.666	1.000					
% Non-European Foreign Born	0.476	0.733	0.931	1.000				
% Hispanic or African American(NH)	0.817	0.520	0.732	0.786	1.000			
% Hispanic	0.881	0.439	0.758	0.721	0.910	1.000		
% African American(NH)	0.599	0.507	0.569	0.706	0.906	0.648	1.000	
% Asian(NH)	0.091	0.630	0.529	0.585	0.282	0.258	0.253	1.000

NERI Calculation

The NERI is a simple calculation with a value ranging from 0 to 1.0. It is the sum of four variables (percentages) divided by the sum of the maximum values of all four variables. This results in a single variable in which equal weight is given to each underlying variable.

%Naturalized: range 0 to 1.0 (100%)

%Non-European Foreign Born: range 0 to 1.0 (100%)

%Non-European Race = %Hispanic or African American(NH) + %Asian(NH): range 0 to 1.0 (100%)

Example:

$$\begin{aligned}
 \text{NERI for Andover} &= (\% \text{Naturalized} + \% \text{Non-European Foreign Born} + \% \text{Hispanic or African} \\
 &\quad \text{American(NH)} + \% \text{Asian(NH)}) / 3 \\
 &= (3.24\% + 1.25\% + 2.6\% + 1.12\%) / 3 \\
 &= 0.082 / 3 \\
 &= 0.027
 \end{aligned}$$

Map Categories

There are four map categories: High, Above Average, Average, and Below Average based on NERI values or changes in NERI values between 2000 and 2009/2010. Initially, five map categories (High, Above Average, Average, Below Average, and Low) were calculated using ArcMap™ (ESRI®) software using the natural breaks (Jenks) classification method. The Below Average and Low categories were combined into a single category called Below Average.